

54th Annual Eagle River Antique Show & Sale

Come join us for the 54th annual Eagle River Antique Show and Sale! It will be held at the Eagle River Derby Track Exposition Hall, located on Hwy 45 north of Eagle River Friday, August 1st, 9:00 AM to 5:00 PM and Saturday, August 2nd, from 9:00 AM to 4:00 PM.

This antique show is sponsored by the Rotary Club of Eagle River. This show is the longest running antique show in the Northwood's and the ONLY antique show up North entirely benefiting a service club's community projects. All the proceeds from this show, including all the fees collected at the door, are used by the Rotary Club for their special community projects. The Club yearly sponsors two \$1000 scholarships for local graduating seniors, sends 2 girls annually to Badger Girls State, supports the local Cranberry Fest, Klondike Days and sponsors a "Warm the Children" winter project. The Rotary also supports an ongoing Youth Exchange Program and holds a wine tasting event as another fund raiser in addition to the Antique Show and Sale. This year's special projects included the Eagle River Bike Rack Project, Olsen Memorial Library, Demmer Library, and the Dictionary Project for 3rd Graders.

Exhibitors for the show are professional antiques dealers from the Northern Wisconsin Antique Dealers Association along with select guest dealers. The Rotary Club and NWADA work very hard every year to provide a unique and quality antiques show that has become a successful, anticipated summer event.

Top quality antique dealers from Wisconsin and Illinois will be bringing their best antiques.....including many items they have saved special just for this show.

An excellent selection of antique furniture in a wide variety of woods and styles will be available. You can also expect to find fine antique and vintage costume jewelry; sterling silver flatware and hollowware; brass and copper; ironstone; art pottery; elegant, depression & kitchen glassware; kitchen collectibles; decorative lodge-look items; sports items; decoys; art; children's toys & collectibles; vintage textiles; art glass; Military collectibles; and small primitives and country pieces at this show. There is something for everyone in every price range!

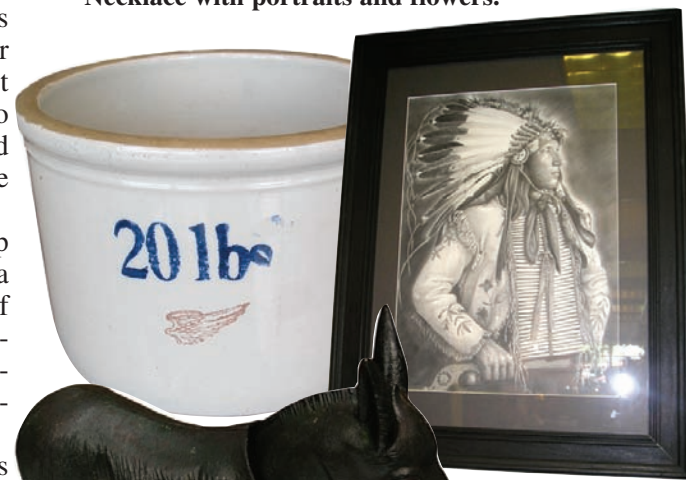
Also we are happy to announce the return this year of Mary Lou's Crystal Repair....a very popular exhibitor in years past! Because of a schedule conflict Bob and Mary Lou were unable to exhibit the last two years, but they will be with us again this year to mend your damaged crystal, china, porcelain or pottery while you shop.

Mark your calendar now! Come out and help us celebrate our 54th year.....the Rotary Club is a wonderful community organization and is deserving of our support and appreciation! A lot of good things happen in Eagle River every year thanks to this fine organization, but none of this can happen without public support.

The show also has free parking. For questions or additional information call (920)533-8731.



Carol Hageness of Sunshine Treasures will be bringing this 18K White gold ring with 90 points of rubies Circa 1920's; Unique Victorian Cameo Necklace with portraits and flowers.



Ginny Romanski from Antiques by Ginny will be bringing this Inmate Art, Native American pencil portrait ; Rare nodding iron donkey door stop, early 1900's; Red Wing 20# butter crock, mint! Ph: 715-848-1912



Richard Gersten of the Yankee Collector will be bringing this Civil War Colt Army Revolver; c. 1880's Chippewa Moccasins; Rare U.S.A. Rev. War Continental B Ph: 708-786-8630



Time's Treasures will be bringing this large fish mount and some handmade models of paddle wheel boats. Ph: 608-617-7066



Out on the Farm Antiques will be bringing this Parlor Stove, detail on stove; Wind up toys; Three draw chest. Ph: 920-294-3068



Jim & Joan Walter of The Calamity House will be bringing a lot of folksy hand-made fishing items including a large landing net, fishing spear and 13" sturgeon decoy; 5 nice pieces of Red Wing in Excellent condition including an 11" bowl, 2 gal. single wing jug, Superior Coffee (Oshkosh, WI) Bean Pot and a 2 gal crock and lid; A very rustic 30" wide Yellow Cab Sign. Ph. 920-533-8731



For the Shelf will be bringing this twig furniture night stand with black paint and gold trim, 24" tall by 12" wide and 9" deep; large green trapper basket c 1930's with dimensions of 22" tall by 16" wide by 15" deep; a salesman's sample hickory rocking chair ;a unique and early LL Bean collapsible, folding sled circa 1940's - 50" long shown in open position; Ph: 414-688-3606

See You At The Show!